

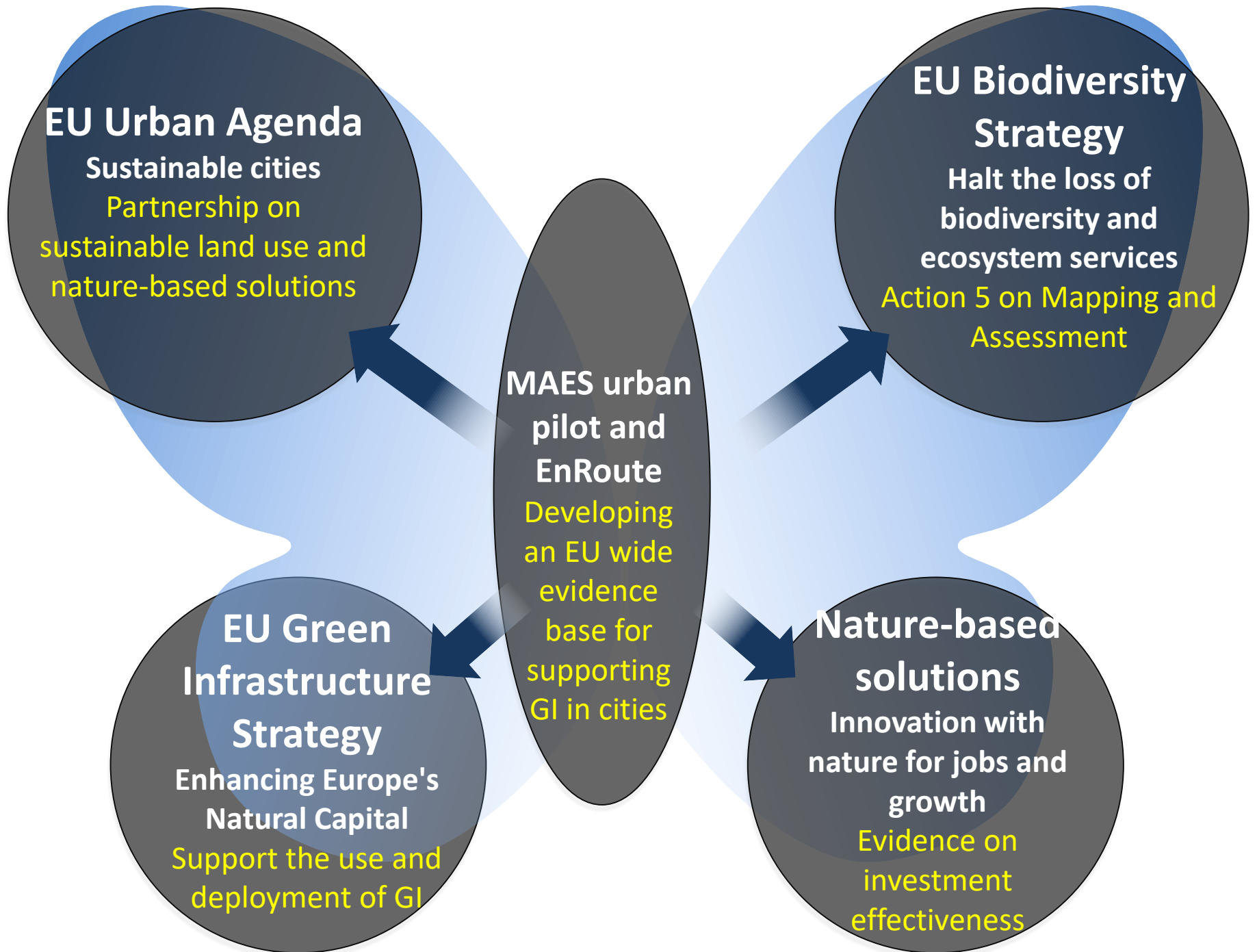
# The European Commission's science and knowledge service

Joint Research Centre

## Enhancing Resilience of Urban Ecosystems through Green Infrastructure (EnRoute)

*A pilot project of the European  
Parliament*





## EU Urban Agenda

Sustainable cities

Partnership on sustainable land use and nature-based solutions

## EU Biodiversity Strategy

### Strategy

Halt the loss of biodiversity and ecosystem services

Action 5 on Mapping and Assessment

## MAES urban pilot and EnRoute

Developing an EU wide evidence base for supporting GI in cities

## EU Green Infrastructure Strategy

### Strategy

Enhancing Europe's Natural Capital

Support the use and deployment of GI

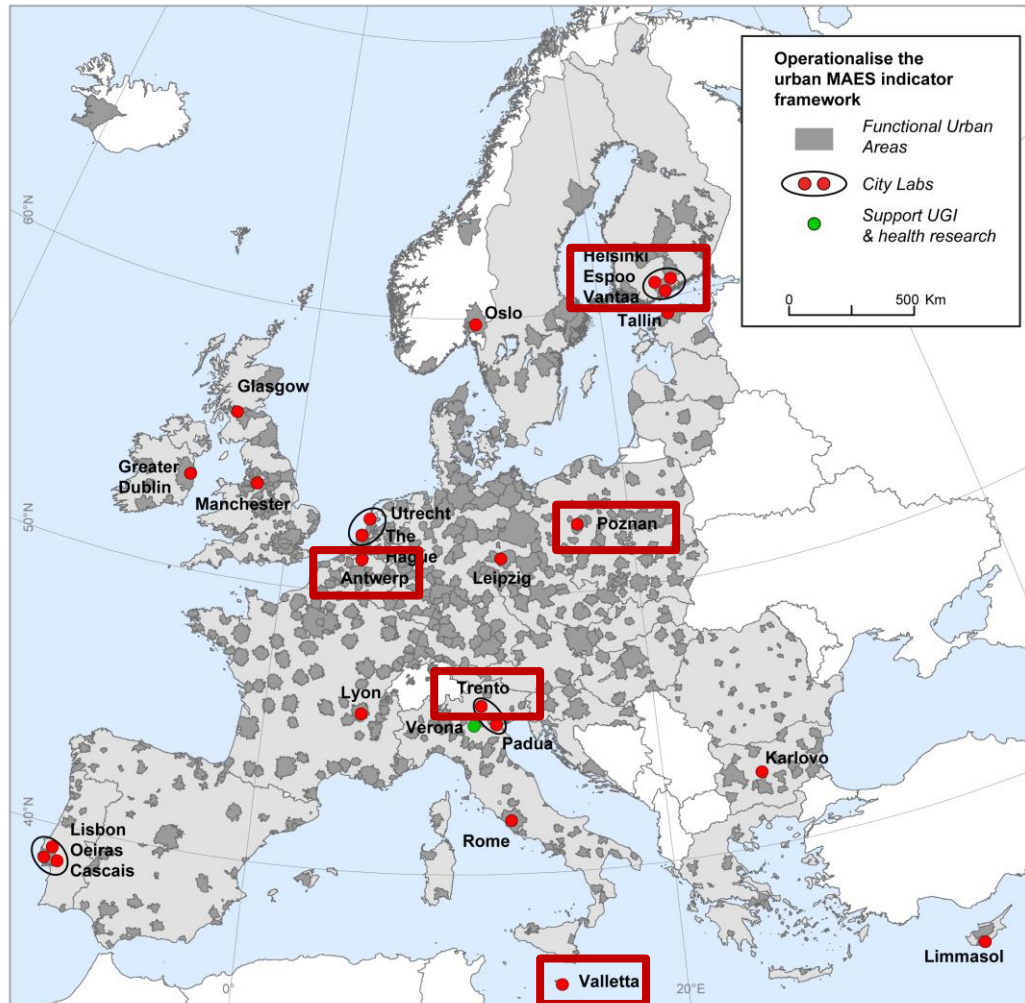
## Nature-based solutions

### solutions

Innovation with nature for jobs and growth

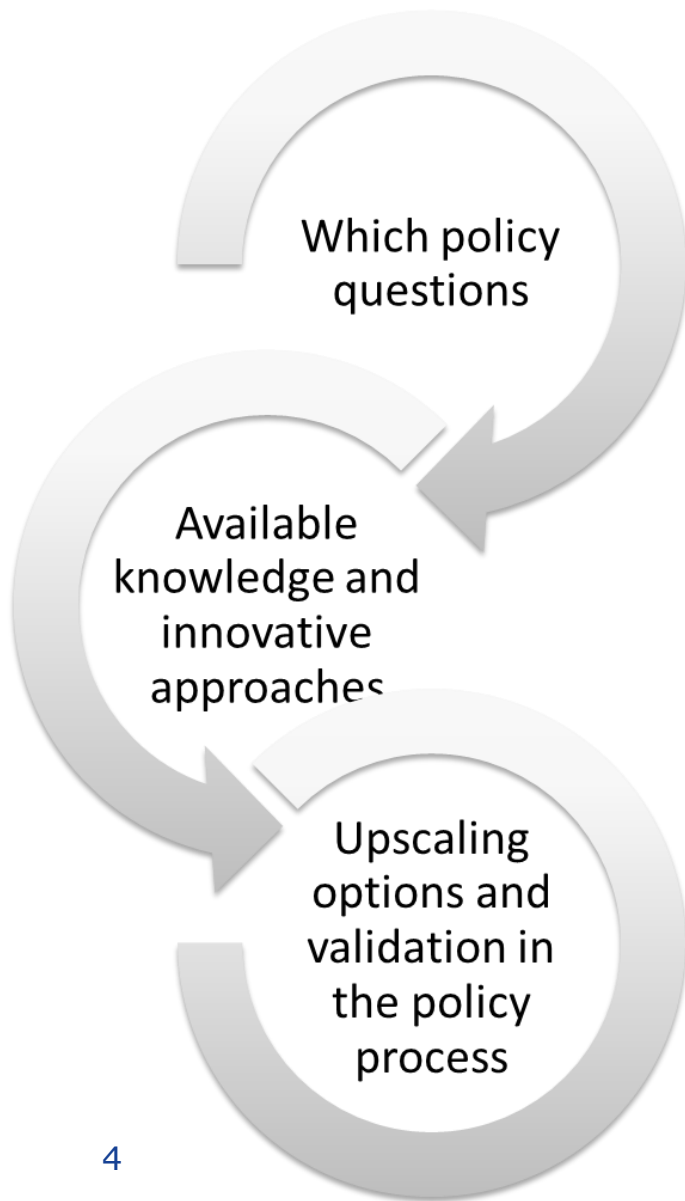
Evidence on investment effectiveness

# EnRoute tests the MAES urban ecosystem assessment framework



Shared with  
ESMERALDA

# EnRoute approach



**EnRoute cities formulate key policy questions**

**EnRoute scientists map and assess indicators of urban green space and ecosystem services**

**Comparing outcomes between cities and across scales**

# ESMERALDA

- Provided a platform to test the MAES guidance at a local decision scale
- Shared 5 cities with EnRoute

# Upscaling and validation in policy

## *Growing with green ambitions*

Growing cities with sufficient green space for everyone

Leipzig, Utrecht, Karlovo

## *BiodiverCities*

A focus on maintaining urban trees and biodiversity; embedding the city in a regional ecological network, and urban bee keeping  
Lisbon, Limmasol, Oslo, Helsinki, Padova, Rome

## *Improving the quality of life*

Community based approaches for investing in natural capital and urban green space for recreation

Machester, Poznan, Trento

## *Green cities, healthy cities*

Different examples of proper planning of how urban green space delivers benefits for physical and mental health.

The Hague, Rome

## *Sustainable strategic urban planning*

Development of multi-functional urban green and blue infrastructure and integration in regional planning.

Antwerp, Malta, Dublin

## *Climate-proof cities*

Urban nature to support climate transition

Glasgow, Tallinn

# EnRoute

Find us on <http://oppla.eu/enroute>

Contact: [JRC-enroute-project@ec.europa.eu](mailto:JRC-enroute-project@ec.europa.eu)

EnRoute coordination team: Joachim Maes, Grazia Zulian (JRC), Martijn Thijssen (ORG-ID, NL), Julie Raynal (DG ENV)